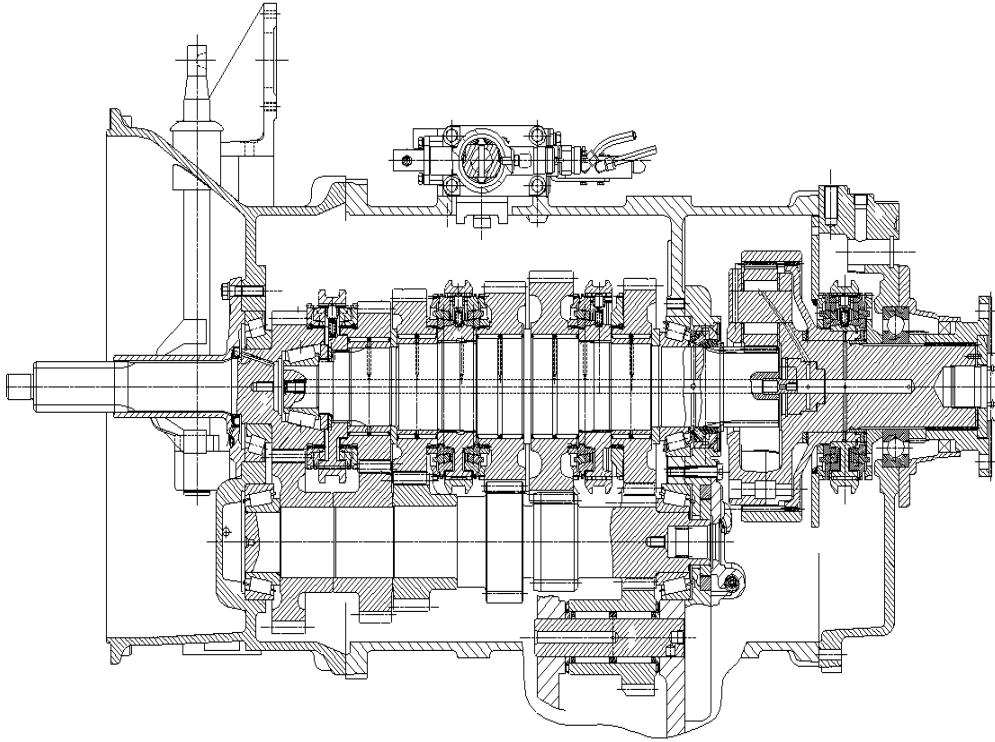


Sinotruk International

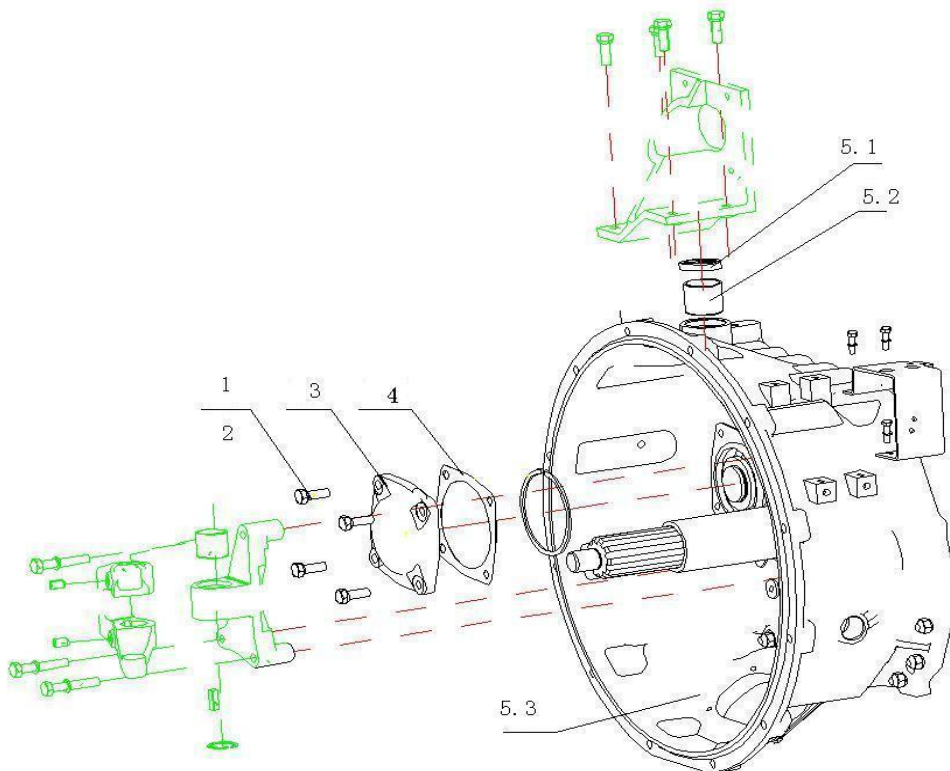
WEBSITE: <https://www.sinotrukinternational.com>

E-MAIL: sinotruk@sinotrukinternational.com

3.1.01 变速器总成/Transmission Ass.



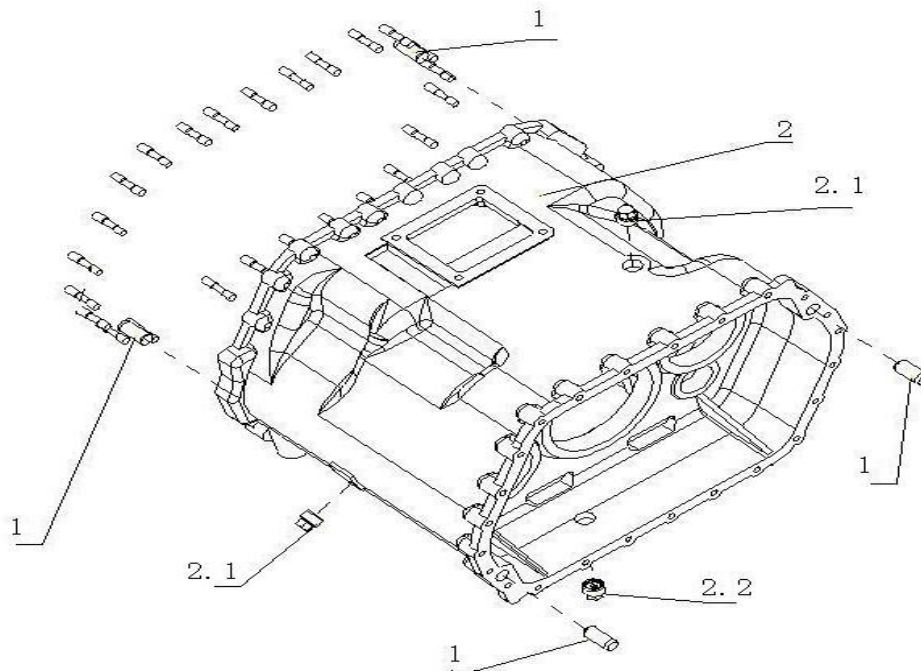
3.1.02 变速器前壳组件/Transmission Front Housing



3.1.02 变速器前壳组件/Transmission Front Housing

序号	零部件图号	名称	Part Name	数量	备注
No.	Part No.			Qty	Remark
1	Q150B1030	六角头螺栓	Screw	4	
2	Q40310	弹簧垫圈	Spring washer	4	
3	WG2222000001	副轴端盖	Cover	1	
4	WG2229000002	副轴端盖衬垫	Gasket	1	
5	AZ2203000001	变速器前壳总成	Transmission Front Housing ass.	1	
5.1	WG2229003030	复合衬套	Bush	1	
5.2	WG9003073001	骨架油封PS 30 45 8	Oil sealing	1	
5.3	AZ2220000201	变速器前壳	Transmission Front Housing	1	
6	WG2229000001	变速器前壳衬垫	Gasket	1	
7	Q341B10	1型六角螺母-细牙	Nut	25	
8	Q40310	弹簧垫圈	Spring washer	25	

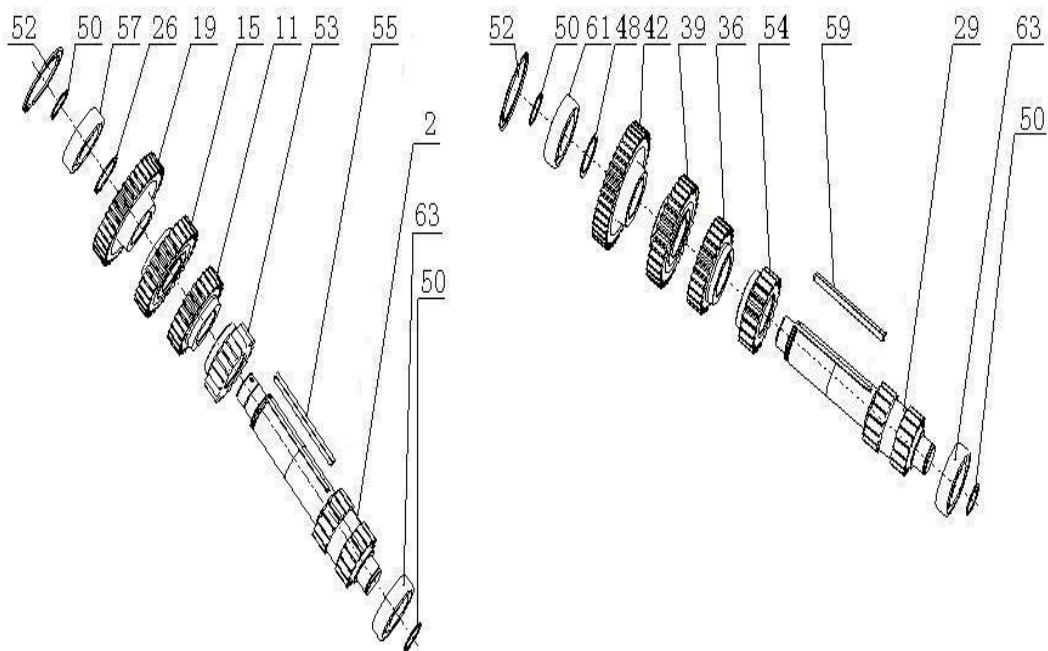
3.1.03 变速器中壳组件/Transmission Housing -Middle



3. 1. 03 变速器中壳组件/Transimission Housing -Middle

序号	零部件图号	名称	Part Name	数量	备注
No.	Part No.			Qty	Remark
1	WG2229010001	定位销	Pin	4	
2	AZ2203010005	变速器中壳总成	Transmission Housing -Middle ass.	1	
2.1	WG2229010002	螺塞	Screw plug	2	
2.2	WG2203010002	放油螺塞总成	Screw plug	1	
3	Q1231035	柱头螺栓	Screw	25	

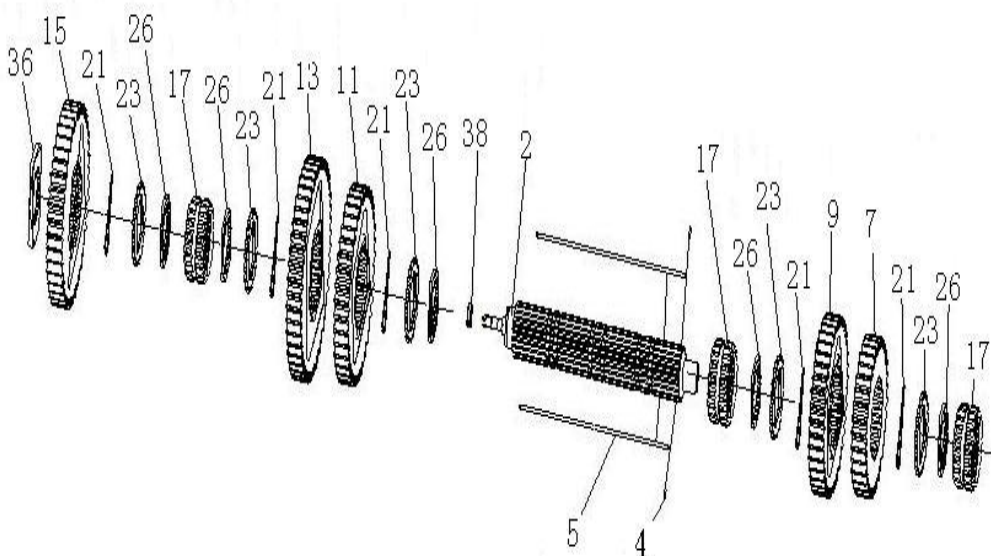
3. 1. 04 副轴组件/Lay Shaft



3. 1. 04 副轴组件/Lay Shaft

序号	零部件图号	名称	Part Name	数量	备注
No.	Part No.			Qty	Remark
-	az2203030209	副轴总成(左)	Auxiliary shaft-left ass.	1	
2	az2210030220	副轴(左)	Auxiliary shaft-left	1	
11	az2210030224	副轴三挡齿轮	3rd gear	1	
15	AZ2210030226	副轴四挡齿轮	4th gear	1	
19	AZ2210030227	副轴传动齿轮	Helical gear	1	
26	Q43160	轴用弹性挡圈	Snap ring	1	
28	AZ2203030210	副轴总成(右)	Auxiliary shaft-right ass.	1	
29	AZ2210030215	副轴(右)	Lay shaft-right	1	
36	AZ2210030224	副轴三挡齿轮	3rd gear	1	
39	AZ2210030226	副轴四挡齿轮	4th gear	1	
42	AZ2210030227	副轴传动齿轮	Helical gear	1	
48	Q43160	轴用弹性挡圈	Snap ring	1	
50	Q43145	轴用弹性挡圈	Snap ring	4	
52	AZ9003990100	止动环	Ring	2	
53	AZ2210030203	副轴二挡齿轮	2nd gear	1	
54	AZ2210030203	副轴二挡齿轮	2nd gear	1	
55	WG2229030003	长平键	Key	1	
57	WG9003329309	圆柱滚子轴承	Bearing	1	
59	WG2229030003	长平键	Key	1	
61	WG9003329309	圆柱滚子轴承	Bearing	1	
63	WG9003320309	圆柱滚子轴承	Bearing	2	

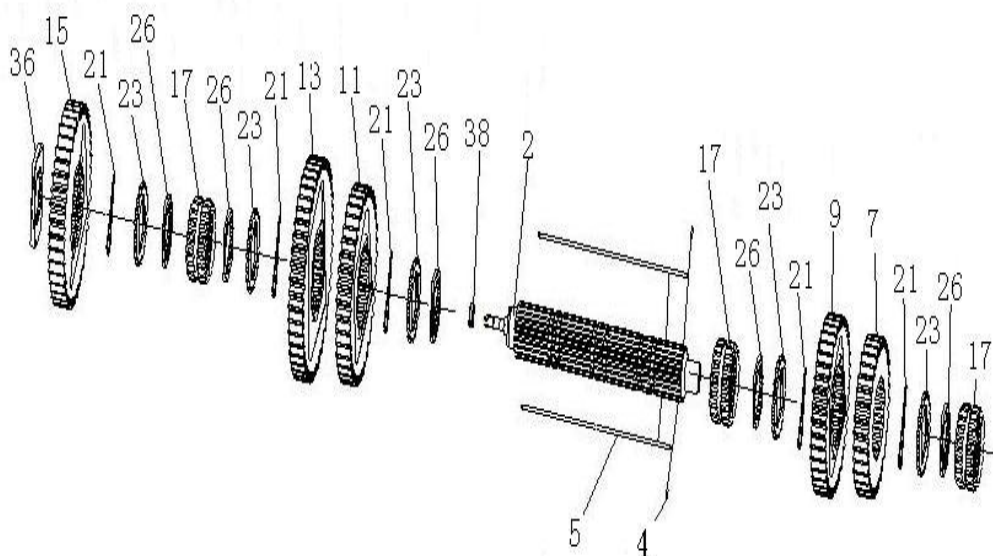
3. 1. 05 主轴组件(细高齿)/Main Shaft



3.1.05 主轴组件(细高齿)/Main Shaft

序号	零部件图号	名称	Part Name	数量	备注
No.	Part No.			Qty	Remark
1	AZ2203040405	主轴总成	Main shaft ass.	1	
2	WG2203040009	主轴带球头总成	Main shaft	1	
4	Q5280310	弹性圆柱销	Spring cylinder pin	2	
5	WG2229040211	六角键	Hex key	2	
7	AZ2210040224	主轴四挡齿轮	4th gear	1	
9	AZ2210040225	主轴三挡齿轮	3rd gear	1	
11	AZ2210040206	主轴二挡齿轮	2nd gear	1	
13	AZ2210040230	主轴一档齿轮	1st gear	1	
15	AZ2210040207	主轴倒档齿轮	Reverse gear	1	
17	WG2210040210	主轴滑套	Slide sleeve	3	
21	WG2229040003	卡簧	Snap spring	5	
23	WG2210040012	花键挡片	Spacer	5	
26	AZ2208040001	花键调整片组	Adjust washer unit	1	
27	WG2210040021	花键调整片	Adjust washer	1	
29	WG2210040022	花键调整片	Adjust washer	1	
31	WG2210040023	花键调整片	Adjust washer	1	
33	WG2210040024	花键调整片	Adjust washer	1	
36	WG2210040002	主轴大挡片	Spacer	1	
38	AZ2208040002	主轴调整垫片组	Adjust washer unit	1	
39	WG2229040031	主轴调整垫片	Adjust washer	1	

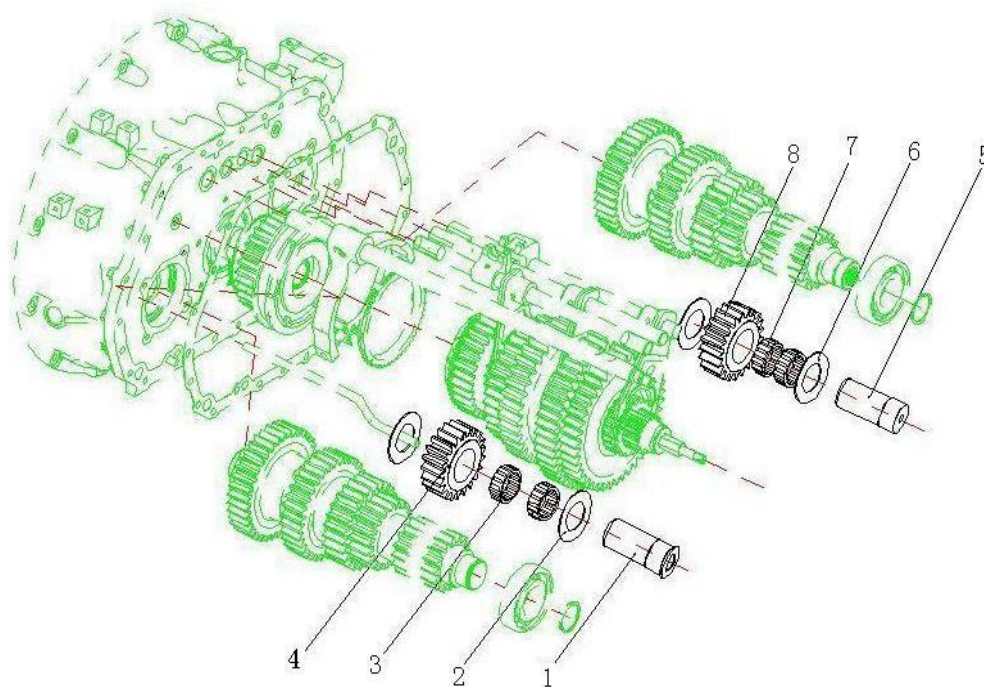
3.1.05 主轴组件(细高齿)/Main Shaft



3.1.05 主轴组件(细高齿)/Main Shaft

序号	零部件图号	名称	Part Name	数量	备注
No.	Part No.			Qty	Remark
41	WG2229040032	主轴调整垫片	Adjust washer	1	
43	WG2229040033	主轴调整垫片	Adjust washer	1	
45	WG2229040034	主轴调整垫片	Adjust washer	1	
47	WG2229040035	主轴调整垫片	Adjust washer	1	
49	WG2229040036	主轴调整垫片	Adjust washer	1	
51	WG2229040037	主轴调整垫片(6.15)	Adjust washer	1	
53	WG2229040038	主轴调整垫片(6.30)	Adjust washer	1	
55	WG2229040039	主轴调整垫片(6.45)	Adjust washer	1	

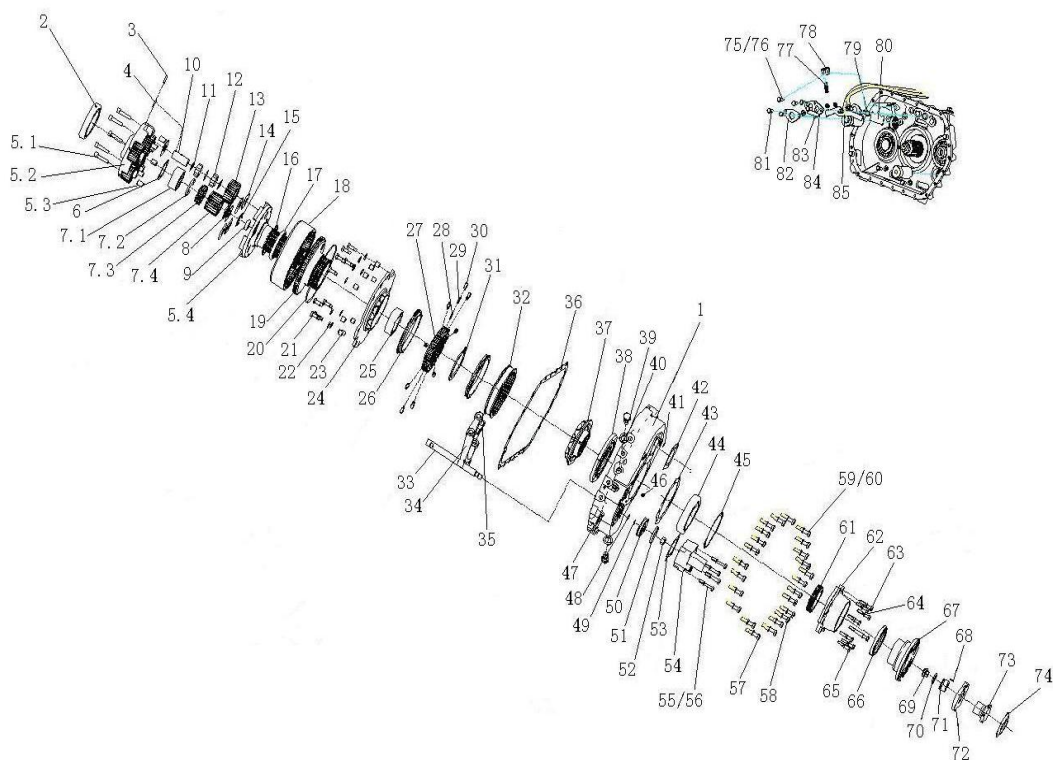
3.1.06 惰轮轴组件/Idle Wheel



3.1.06 惰轮轴组件/Idle Wheel

序号	零部件图号	名称	Part Name	数量	备注
No.	Part No.			Qty	Remark
1	WG2212050101	惰轮轴(左)	Idle gear shaft-left	1	
2	WG2229050001	垫片	Washer	2	
3	WG9003395320	滚针轴承K455320	Needle bearing	2	
4	WG2210050001	惰轮	Idle gear	1	
5	WG2212050102	惰轮轴(右)	Idle gear shaft-right	1	
6	WG2229050001	垫片	Washer	2	
7	WG9003395320	滚针轴承K455320	Needle bearing	2	
8	WG2210050001	惰轮	Idle gear	1	

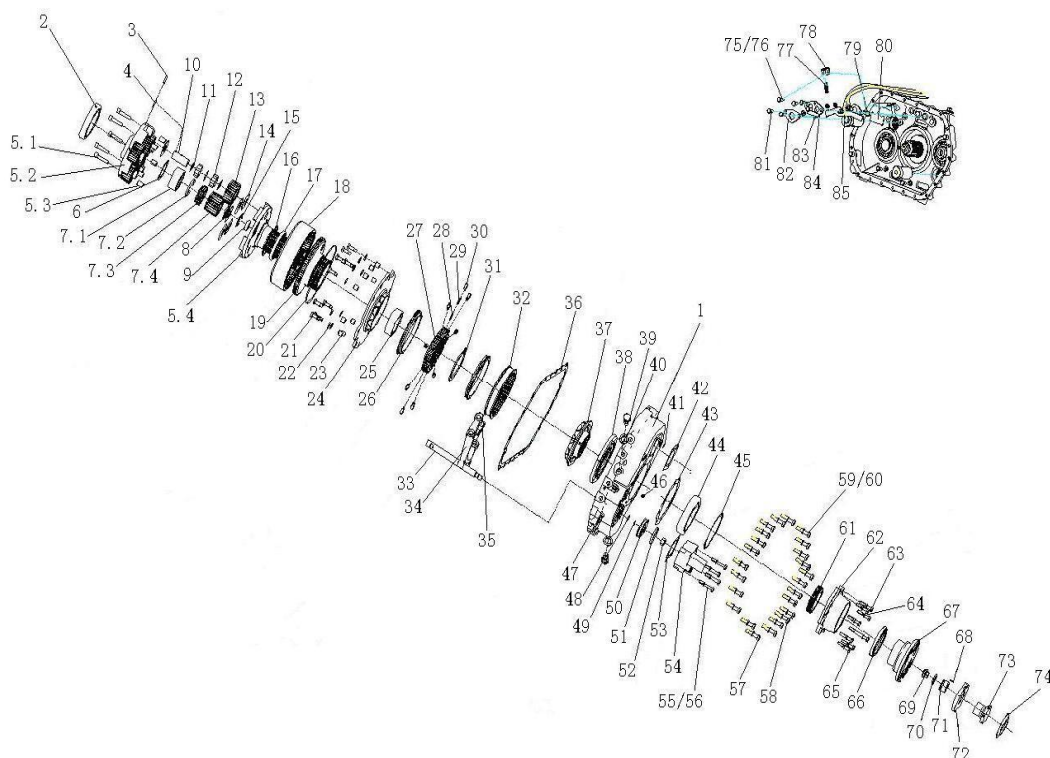
3.1.07 范围档副箱组件/Sub Gearbox



3.1.07 范围档副箱组件/Sub Gearbox

序号	零部件图号	名称	Part Name	数量	备注
No.	Part No.			Qty	Remark
1	AZ2220100105	变速器后壳	Rear housing	1	
2	WG9003326020	滚动轴承6020 GB/T276	Bearing	1	
3	Q5280630	弹性圆柱销	Pin	5	
4	Q5280430	弹性圆柱销	Pin	5	
5	AZ2203100002	行星架总成	Planetary gear frame assembl	1	
5.1	WG9003821255	内六角圆柱头螺钉M12X1.	Screw	5	
5.2	WG2225100002	行星架(前)	Planetary gear frame	1	
5.3	WG2229100001	传扭套	Sleeve	5	
5.4	AZ2225100001	输出轴	Output shaft	1	
5.5	AZ9007970271	螺纹紧固胶LOCTITE271	Thread glue	1	
6	WG2229100005	太阳轮垫片(前)	Gasket	1	
7	AZ2203100003	太阳轮及套总成	Gear assembly	1	
7.1	WG2210100002	花键套	Sleeve	1	
7.2	Q43875	孔用钢丝挡圈	Circlip	1	
7.3	WG2210100003	过渡套	Sleeve	1	
7.4	WG2210100001	太阳轮	Gear	1	
8	WG2229100006	太阳轮垫片(后)	Gasket	1	
9	WG9003326322	滚动轴承63/22 GB/T276	Bearing	1	
10	WG2212100001	行星轮轴	Shaft	5	
11	WG2229100007	滚子间隔片	Shim	15	

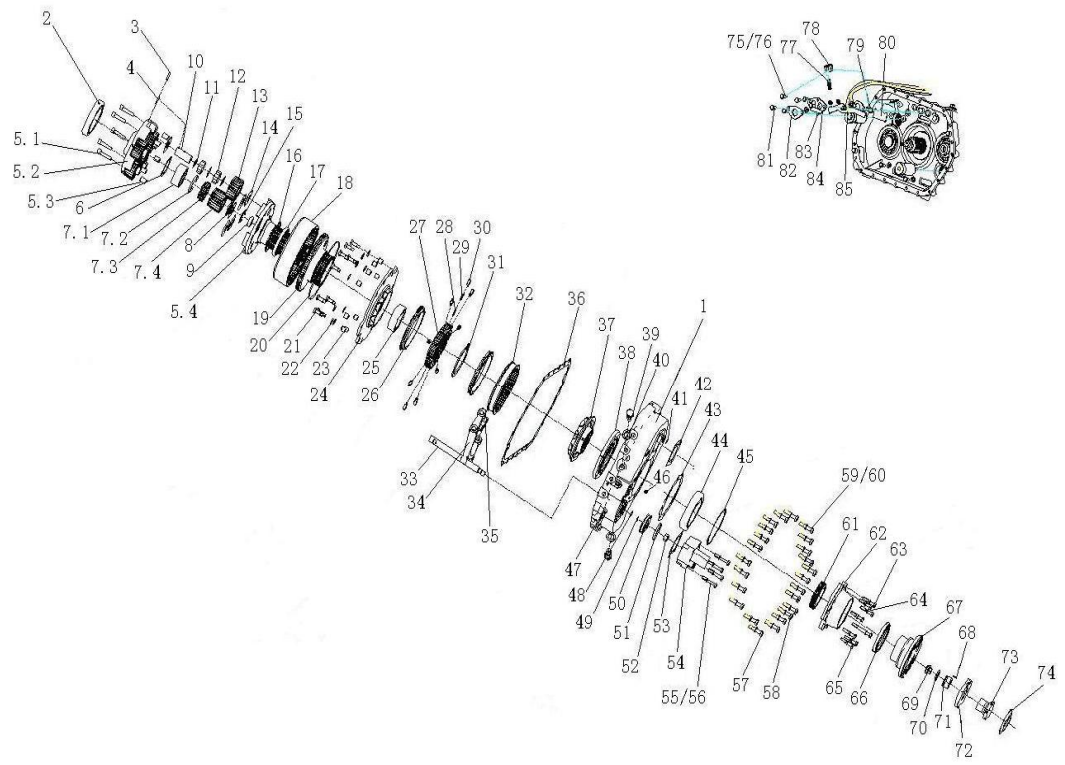
3.1.07 范围档副箱组件/Sub Gearbox



3.1.07 范围档副箱组件/Sub Gearbox

序号	零部件图号	名称	Part Name	数量	备注
No.	Part No.			Qty	Remark
12	WG9003321118	圆柱滚子11X18IIIb GB466	Roller	120	
13	WG2210100004	行星轮	Gear	5	
14	WG2229100008	行星轮垫片	Shim	10	
15	WG9003991056	孔用弹性挡圈	Circlip	1	
16	WG9003991125	孔用压扁钢丝挡圈	Circlip	1	
17	WG9003321820	滚动轴承61820 GB/T276	Bearing	1	
18	WG2210100005	内齿圈	Ring gear	1	
19	WG2210100006	齿圈支架	Bracket	1	
20	WG2229100012	钢丝挡圈	Circlip	1	
21	Q150B1240	六角头螺栓	Bolt	9	
22	Q40112	平垫圈	Washer	9	
23	WG2229100002	传扭套	Sleeve	9	
24	WG2203100005	低档锥毂总成	Tapered plate assembly	1	
25	WG2229100032	隔套	Sleeve	1	
26	WG2210100009	范围档同步环	Ring	2	
27	WG2210100007	范围档同步齿座	Base	1	
28	WG2229020003	推块内弹簧	Spring	9	
29	WG2229020002	推块外弹簧	Spring	9	
30	WG2229020001	同步推块	Block	9	
31	WG9003991130	轴用弹性挡圈	Circlip	1	

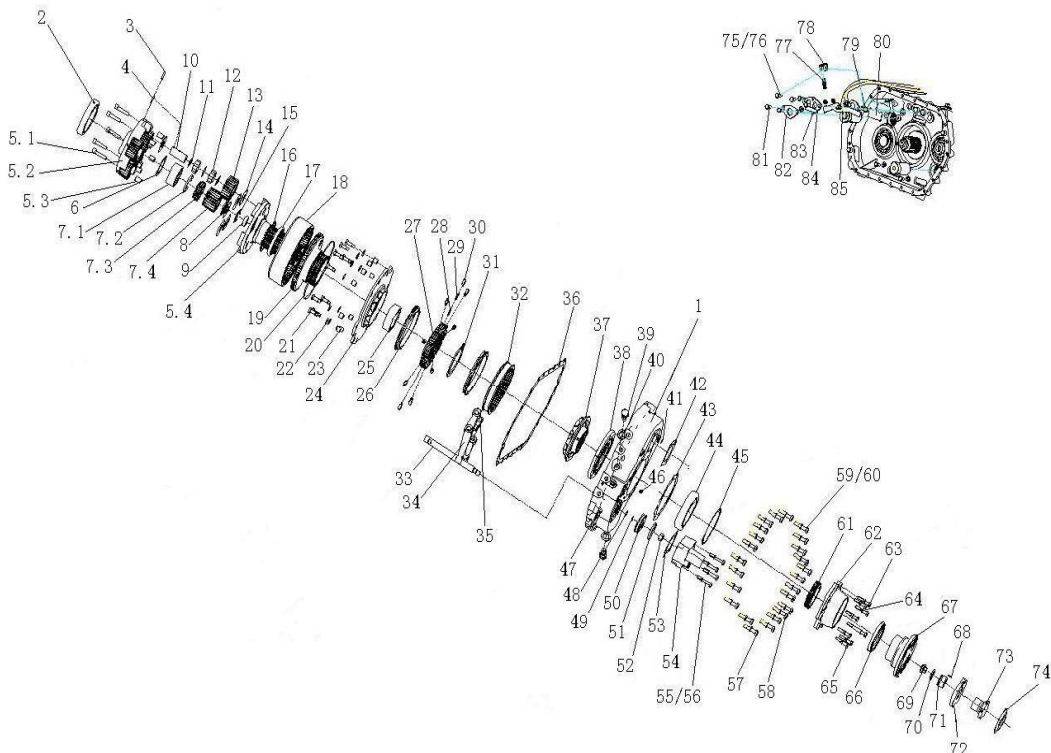
3.1.07 范围档副箱组件/Sub Gearbox



3.1.07 范围档副箱组件/Sub Gearbox

序号	零部件图号	名称	Part Name	数量	备注
No.	Part No.			Qty	Remark
32	WG2210100008	范围档同步滑套	Sleeve	1	
33	WG2214100002	范围档拨叉轴	Fork shaft	1	
34	WG2214100001	范围档拨叉	Fork	1	
35	WG2229100042	拨叉摆块	Block	2	
36	WG2229100062	副箱纸垫	paper gasket	1	
37	WG2203100006	高档锥毂总成	Tapered plate assembly	1	
38	WG2203100007	导油环总成	Oil ring assembly	1	
39	WG2229100043	拨叉支撑销	Pin	2	
40	WG9003990024	波形弹性垫圈	Wave washer	2	
41	WG9003070800	O形圈18000800 GB3452.1	O-ring	1	
42	WG2229100048	盖板衬垫	Gasket	1	
43	WG2229100041	输出轴后端盖纸垫	Gasket	1	
44	WG9003326218	滚动轴承6218 GB/T276	Bearing	1	
45	AZ2208100003	调整垫片组	Shim	1	
45.1	WG2229100035	调整垫片	Shim	1	
45.2	WG2229100036	调整垫片	Shim	1	
45.3	WG2229100037	调整垫片	Shim	1	
46	WG9003070800	O形圈18000800 GB3452.1	O-ring	1	
47	WG2229100061	吊装板	Plate	1	
48	WG9003072503	O形圈35502500 GB3452.1	O-ring	2	

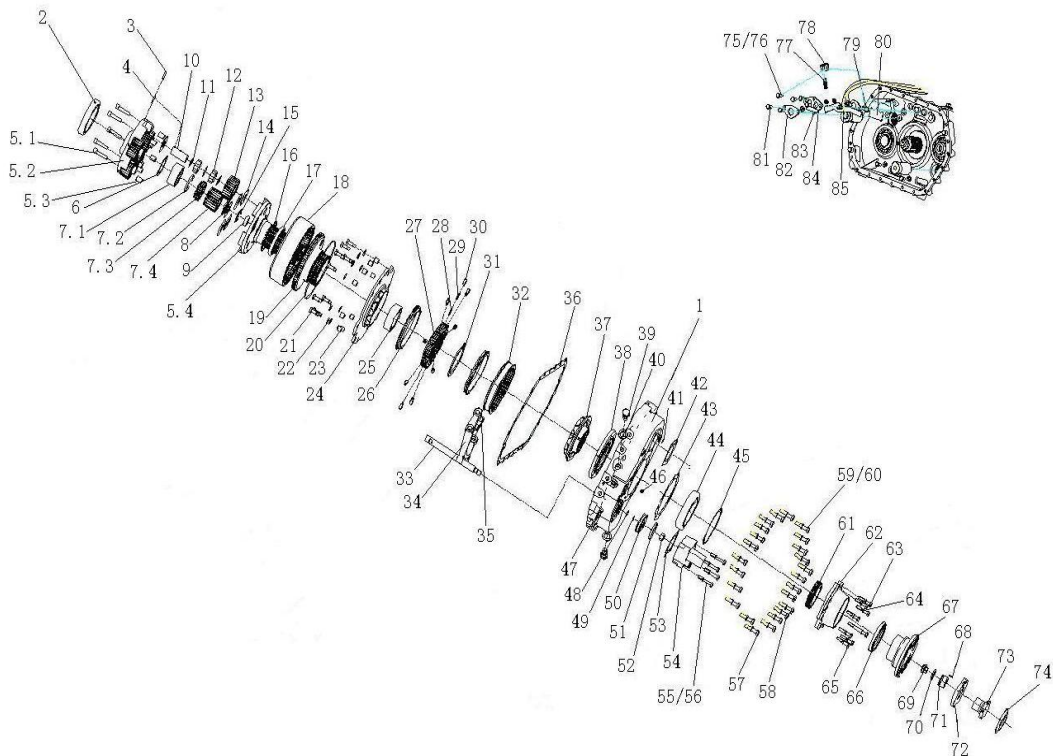
3.1.07 范围档副箱组件/Sub Gearbox



3.1.07 范围档副箱组件/Sub Gearbox

序号	零部件图号	名称	Part Name	数量	备注
No.	Part No.			Qty	Remark
49	WG9003071700	O形圈26500170 GB3452.1	O-ring	1	
50	WG2229100050	范围挡活塞	Piston	1	
51	WG9003076900	O形圈53006900 GB3452.1	O-ring	1	
52	AZ9003870016	六角螺母M16×1.5	Nut	1	
53	WG2229100049	范围挡气缸纸垫	Gasket	1	
54	WG2222100009	范围挡气缸	Range cylinder	1	
55	Q150B1065	六角头螺栓	Bolt	4	
56	Q40310	弹簧垫圈	Spring washer	4	
57	Q150B1050	六角头螺栓	Bolt	16	
58	WG9003801058	六角头螺栓Q150B1058	Bolt	2	
59	Q150B1060	六角头螺栓	Bolt	6	
60	Q40310	弹簧垫圈	Spring washer	24	
61	WG2210100020	传感器齿圈	Ring gear	1	
62	WG2222100023	输出轴后端盖(双油封)	Rear bracket	1	
63	Q150B1055	六角头螺栓	Bolt	7	
64	Q40310	弹簧垫圈	Spring washer	8	
65	Q170B1055	六角头头部带孔螺栓	Bolt	1	
66	WG9003070105	骨架油封PS 105 130 14	Oil seal	1	
67	WG2210100018	输出法兰Φ180端面齿	Flange	1	
68	WG9003345138	滚针P5×13.8 GB309	Needle	1	

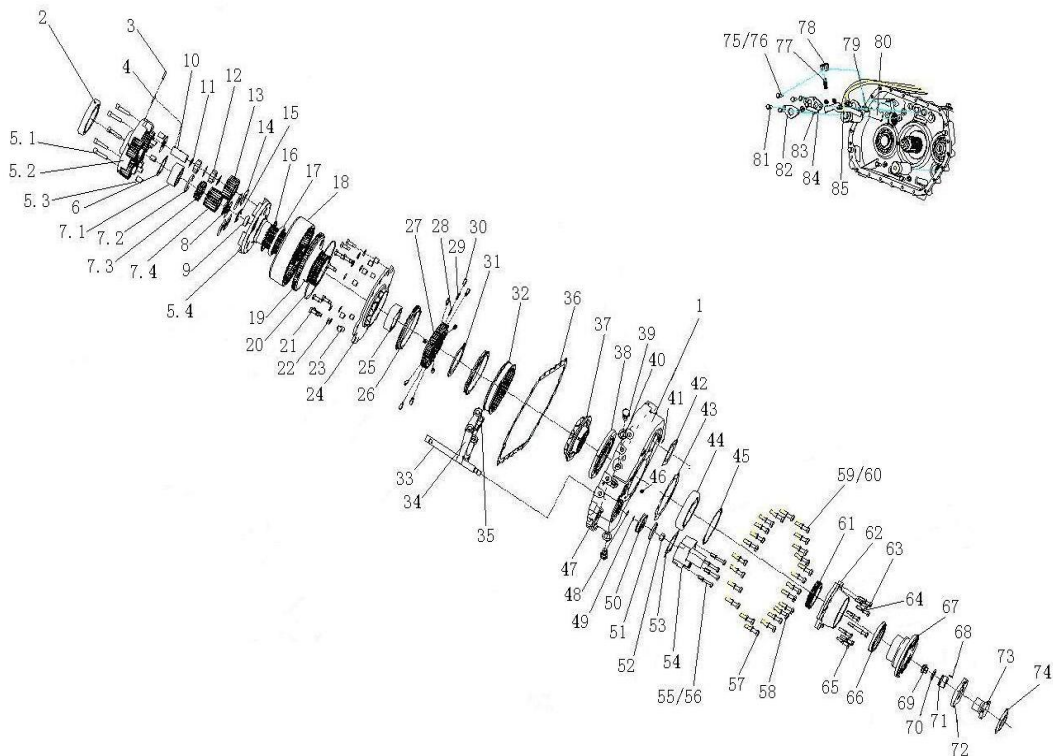
3.1.07 范围档副箱组件/Sub Gearbox



3.1.07 范围档副箱组件/Sub Gearbox

序号	零部件图号	名称	Part Name	数量	备注
No.	Part No.			Qty	Remark
69	WG2229100011	固定螺母	Nut	1	
70	WG9003073150	O形圈35503150 GB3452.1	O-ring	1	
71	WG2229100071	堵塞	Plug	1	
72	WG2229100072	压板	Plate	1	
73	WG2229100073	螺栓	Bolt	1	
74	WG2229100074	锁片	Shim	1	
75	Q150B1020	六角头螺栓	Bolt	1	
76	Q40310	弹簧垫圈	Spring washer	1	
77	WG2229210019	范围档锁弹簧	Spring	1	
78	WG2203100012	弹簧定位销总成	localizer Pin assembly	1	
79	WG2229100056	锁板支销	Pin	1	
80	WG2229100175	锁板垫板	Plate	1	
81	Q150B1025	六角头螺栓	Bolt	5	
82	WG2229100052	锁板压板 (小)	Plate	1	
83	WG2229100054	压板垫块	Block	5	
84	WG2229100174	锁板压板 (大)	Plate	1	
85	WG2229100173	主副箱互锁板	Plate	1	
86	AZ9007970271	螺纹紧固胶LOCTITE271	Thread glue	1	
87	AZ9007990001	硅酮密封胶	Sealant	1	
88	AZ9007970242	螺纹紧固胶LOCTITE242	Thread glue	1	

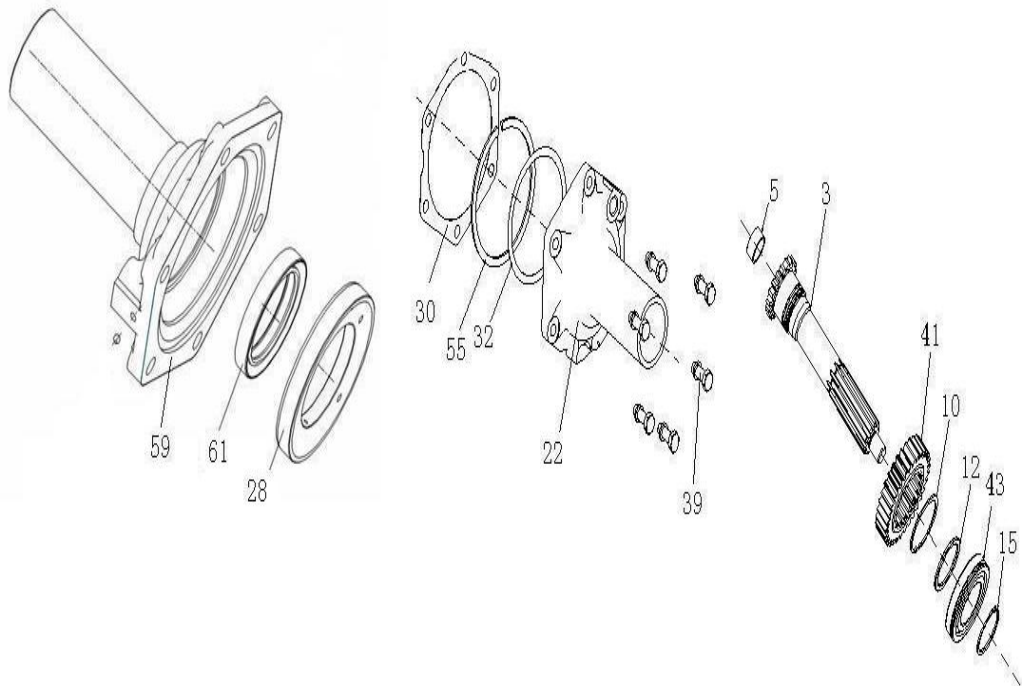
3.1.07 范围档副箱组件/Sub Gearbox



3. 1. 08 输入轴及端盖组件(细高齿)/Input Shaft and Cover

序号	零部件图号	名称	Part Name	数量	备注
No.	Part No.			Qty	Remark
1	AZ2203020021	输入轴及一轴齿轮总成	Input shaft & gear assembly	1	
2	AZ2203020103	输入轴总成	Input shaft assembly	1	
5	WG2229020005	衬套	Bushing	1	
10	WG2229040003	卡簧	Clip	1	
12	WG2229040103	隔套	Sleeve	1	
15	AZ2208020001	卡簧选用件组	Clip components	1	
22	AZ2203020108	输入轴端盖及导油环总成	Cover and oil ring assembly	1	
28	WG2229020007	导油环	Oil ring	1	
30	WG2229020008	输入轴端盖纸垫	Gasket	1	
32	AZ2208020002	输入轴承调整垫片组	Shim	1	
33	WG2229020011	调整垫片	Shim	1	
35	WG2229020012	调整垫片	Shim	1	
37	WG2229020013	调整垫片	Shim	1	
39	WG9003801030	组合涂胶螺栓Q1421030	Bolt assembly	6	
41	WG2210020105	输入轴	Input shaft	1	
43	WG2210020322	一轴齿轮	Gear	1	
45	WG9003326213	滚动轴承6213N-GB/T276	Bearing	1	
47	WG9003991065	轴用弹性挡圈	Circlip	1	
49	WG9003992065	轴用弹性挡圈	Circlip	1	
51	WG9003993065	轴用弹性挡圈	Circlip	1	

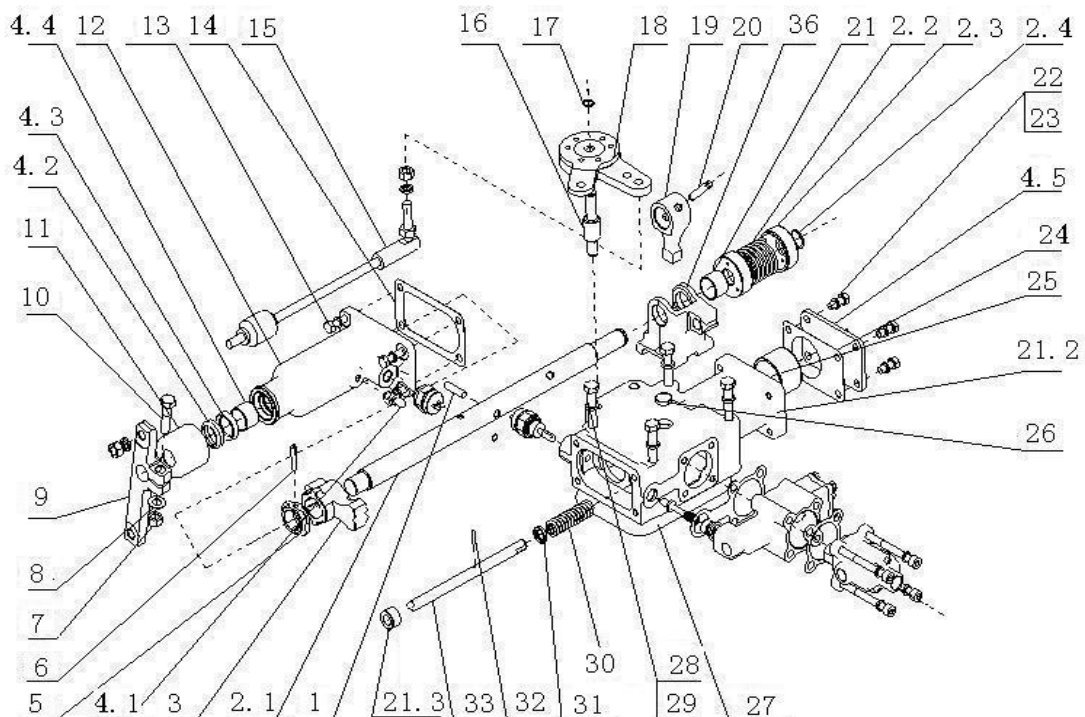
3. 1. 08 输入轴及端盖组件(细高齿)/Input Shaft and Cover



3.1.09 小盖组件/Small Cover

序号	零部件图号	名称	Part Name	数量	备注
No.	Part No.			Qty	Remark
-	AZ2203210040	10挡小盖总成（双杆）	Small cover ass.	1	
1	WG2229210012	驱动销	Pin	1	
2	AZ2203210025	换挡轴总成	Shifting shaft ass.	1	
2.1	AZ2212210007	换挡轴（双杆）	Shifting shaft	1	To 20110107
2.1	WG2212210007	换挡轴（双杆）	Shifting shaft	1	From 20110107
2.2	WG2229210021	定中弹簧（低档侧）	Spring	1	
2.3	AZ2229210007	定中座环	Ring	2	
2.4	Q43120	轴用弹性挡圈	Snap ring	1	
3	AZ2229210008	扇形自锁块	Block	1	To 20110107
3	WG2229210008	扇形自锁块	Block	1	From 20110107
4	AZ2203210008	小盖端盖总成（双杆）	Cover ass.	1	
4.1	Q901	常开式通气塞	Plug	1	
4.2	AZ9003072502	端盖外油封	Oil sealing - outside	1	To 20110107
4.2	WG9003072502	端盖外油封	Oil sealing - outside	1	From 20110107
4.3	WG9003072501	端盖内油封	Oil sealing - inside	1	
4.3	AZ9003072501	端盖内油封	Oil sealing - inside	1	
4.4	WG2229002520	复合衬套	Sleeve	1	
4.5	AZ2229210034	小盖端盖	Cover	1	To 20110107
4.5	WG2229210034	小盖端盖	Cover	1	From 20110107
5	WG2229210014	传感器驱动环	Ring	1	
6	Q5280632	弹性圆柱销	Cylinder pin	1	

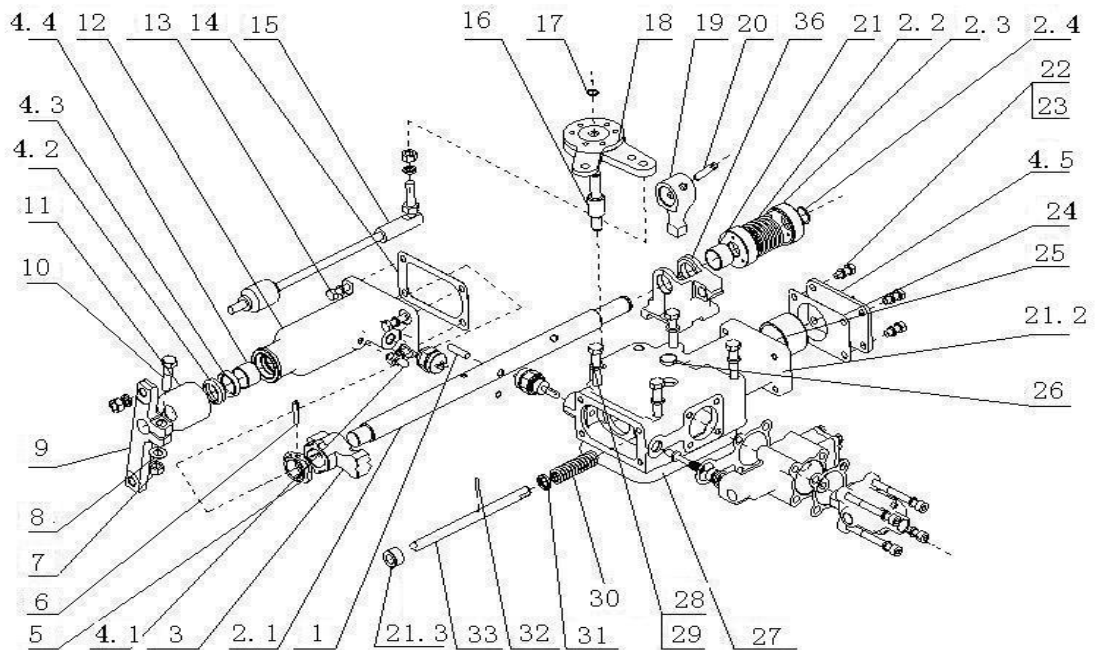
3.1.09 小盖组件/Small Cover



3.1.09 小盖组件/Small Cover

序号	零部件图号	名称	Part Name	数量	备注
No.	Part No.			Qty	Remark
7	Q340B10T13F2	I型六角螺母	Nut	1	
8	Q41810	波形弹性垫圈	Spring washer	1	
9	WG2214210004	摇臂	Rocking arm	1	
10	Q150B1040TF2	六角头螺栓	Screw	1	
11	WG2229210026	防尘罩	Dustproof cover	1	
12	Q40308	弹簧垫圈	Spring washer	4	
13	Q150B0825	六角头螺栓	Screw	4	
14	WG2229210017	端盖衬垫	Gasket	1	
15	WG2229210041	支撑杆总成	Support lever ass.	1	
16	WG2229270003	选档支撑轴	Shaft	1	
17	Q43112	轴用弹性挡圈	Snap ring	1	
18	WG2229210040	选档杆总成	Selecting gear rod assembly	1	
19	AZ2214210103	换挡头	Block	1	To 20110107
19	WG2214210103	换挡头	Block	1	From 20110107
20	WG2229210009	销	Pin	1	
21	AZ2203210030	小盖壳体总成	House ass.	1	To 20110107
21	AZ2203210030	小盖壳体总成	House ass.	1	From 20110107
21.1	WG2229002520	复合衬套SF2 25×28×20	Sleeve	1	
21.2	WG2222210038	小盖壳体(10挡, 双杆)	House	1	
21.3	WG2229210001	衬套	Bush	1	

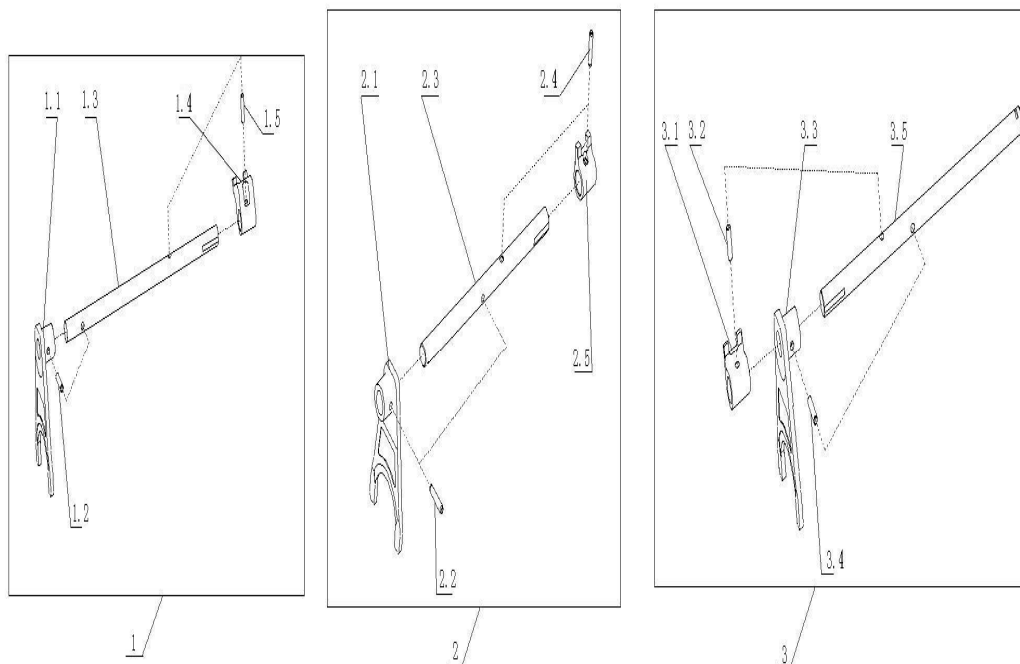
3.1.09 小盖组件/Small Cover



3.1.09 小盖组件/Small Cover

序号	零部件图号	名称	Part Name	数量	备注
No.	Part No.			Qty	Remark
22	Q150B0820	六角头螺栓	Screw	4	
23	Q40308	弹簧垫圈	Spring washer	4	
24	AZ2229210037	小盖端盖纸垫	Paper gasket of small cover	1	To 20110107
24	WG2229210037	小盖端盖纸垫	Paper gasket of small cover	1	From 20110107
25	AZ2229210029	隔环	Spacer ring	1	To 20110107
25	WG2229210029	隔环	Spacer ring	1	From 20110107
26	Q72220	碗形塞片	Core plug	1	
27	AZ2229210050	小盖纸垫	Paper gasket	1	To 20110107
27	WG2229210050	小盖纸垫	Paper gasket	1	From 20110107
28	Q150B1085	六角头螺栓	Screw	4	
29	Q40310	弹簧垫圈	Spring washer	4	
30	AZ2229210033	自锁弹簧	Spring	1	To 20110107
30	WG2229210033	自锁弹簧	Spring	1	From 20110107
31	WG2229210011	弹簧挡片	Spacer	1	
32	AZ9003343178	滚针	Needle	1	
33	AZ2212210005	自锁销轴	Shaft	1	To 20110107
33	WG2212210005	自锁销轴	Shaft	1	From 20110107
35	WG2222210034	小盖端盖(双杆摇臂侧)	Small end cover	1	
36	AZ2214210010	互锁叉	Fork	1	To 20110107
36	WG2214210010	互锁叉	Fork	1	From 20110107
37	WG2229210036	定位导套	Guide sleeve	2	
	AZ9007970242	螺纹紧固胶	Glue	1	
	AZ9007970001	LOCTITE 粘结剂	Glue	1	

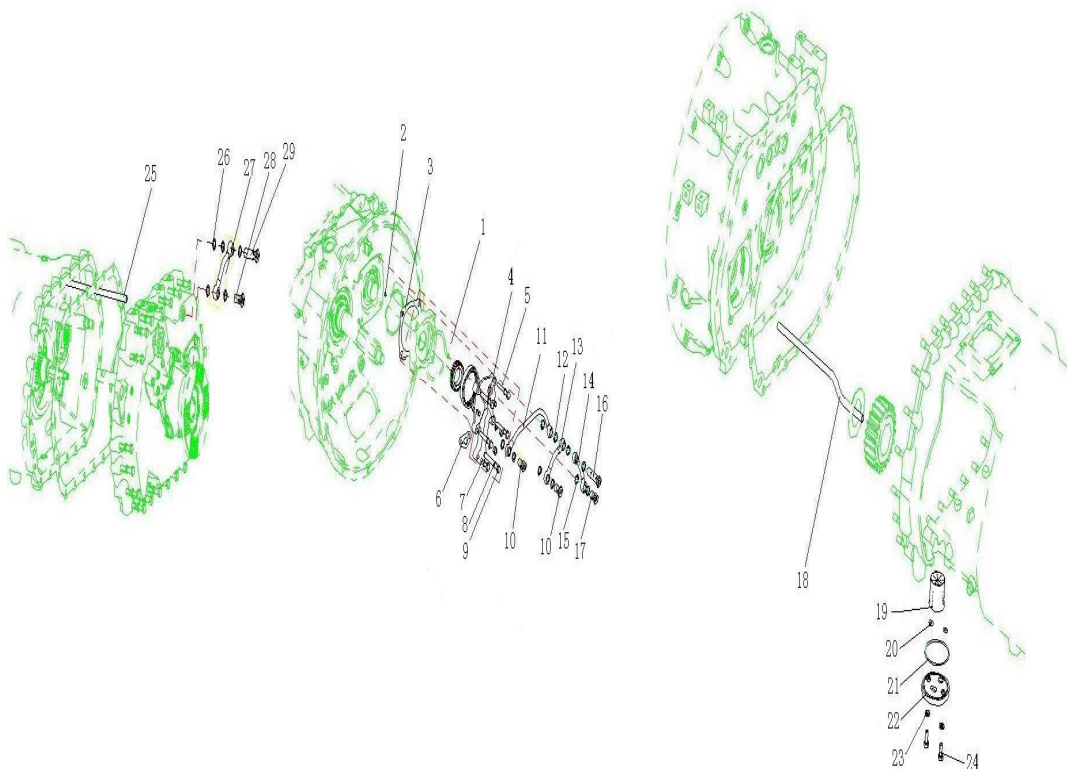
3.1.10 拨叉轴组件/Fork Shaft



3.1.10 拨叉轴组件/Fork Shaft

序号	零部件图号	名称	Part Name	数量	备注
No.	Part No.			Qty	Remark
1	AZ2203220101	倒爬挡拨叉轴总成	Reverse gear fork shaft ass.	1	
1.1	WG2214220001	拨叉	Fork	1	
1.2	WG2229220002	销	Pin	1	
1.3	WG2212220201	倒爬挡拨叉轴	Reverse gear fork shaft	1	
1.4	WG2214220002	倒挡拨块	Block-reverse gear	1	
1.5	WG2229220001	销	Pin	1	
2	AZ2203220010	一、二挡拨叉轴总成	1st&2nd gear fork shaft ass.	1	
2.1	WG2214220001	拨叉	Fork	1	
2.2	WG2229220002	销	Pin	1	
2.3	WG2212220102	一、二挡拨叉轴	1st&2nd gear fork shaft	1	
2.4	WG2229220001	销	Pin	1	
2.5	WG2214220004	前进档拨块	Block	1	
3	AZ2203220103	三、四挡拨叉轴总成	3rd&4th gear fork shaft ass.	1	
3.1	WG2214220003	前进档拨块	Block-forward gear	1	
3.2	WG2229220001	销	Pin	1	
3.3	WG2214220001	拨叉	Fork	1	
3.4	WG2229220002	销	Pin	1	
3.5	WG2212220103	三、四挡拨叉轴	3rd&4th gear fork shaft	1	

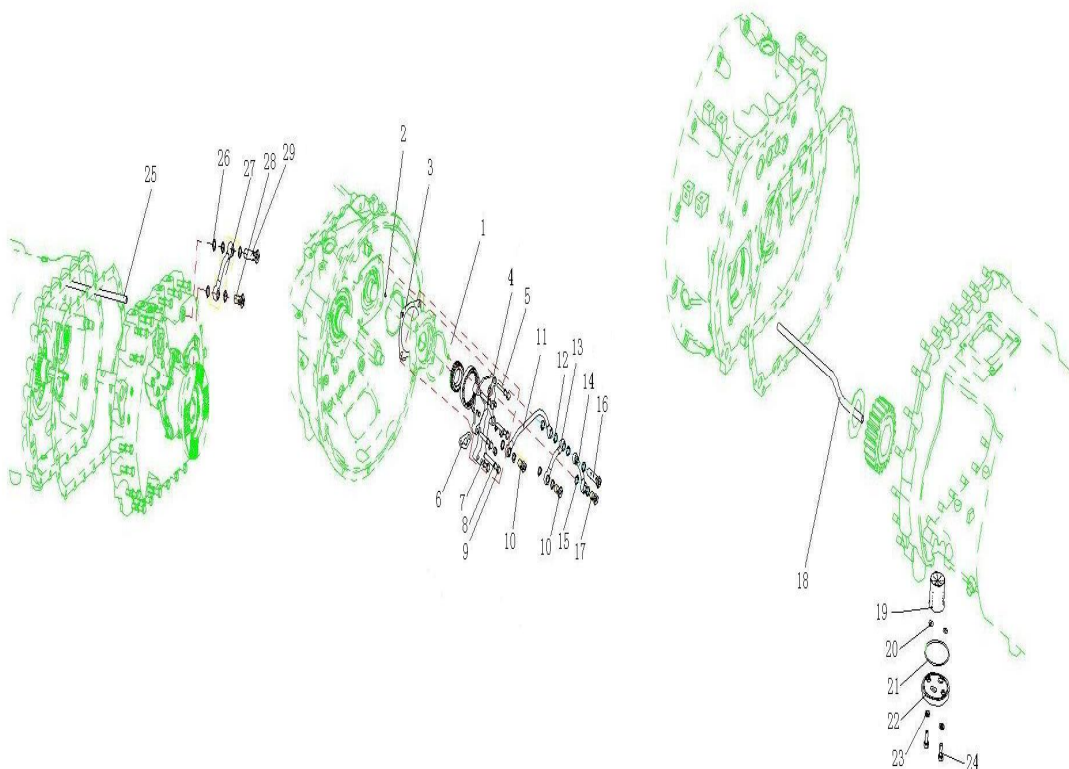
3.1.11 油泵及管路组件/Oil Pump and Pipe



3.1.11 油泵及管路组件/Oil Pump and Pipe

序号	零部件图号	名称	Part Name	数量	备注
No.	Part No.			Qty	Remark
1	WG2203240005	油泵总成	Oil pump	1	
2	WG9003338000	钢球8.000 G200b GB308	Ball	1	
3	WG2229000002	副轴端盖衬垫	Gasket	1	
4	Q40110	平垫圈	Washer	2	
5	Q150B1070	六角头螺栓	Bolt	4	
6	WG2229240003	进油管纸垫	Gasket	1	
7	Q150B1040	六角头螺栓	Bolt	1	
8	Q40310	弹簧垫圈	Spring washer	4	
9	Q150B1090	六角头螺栓	Bolt	1	
10	190003962627	空心螺栓	Hollow bolt	2	
11	WG2203240013	箱体进油管总成	Tube assembly	1	
12	WG9004130016	组合密封垫圈	Gasket assembly	8	
13	WG2203240012	输入轴进油管总成	Tube assembly	1	
14	WG2203240011	出油管总成	Tube assembly	1	
15	WG9004130016	组合密封垫圈	Gasket assembly	2	
16	WG9003961670	空心螺栓	Hollow bolt	1	
17	190003962627	空心螺栓	Hollow bolt	1	
18	WG2229240107	箱内管1	Tube	1	
19	WG2203240007	滤网总成	Net assembly	1	
20	WG9003070085	O形圈26500850 GB3452.1	O-ring	2	

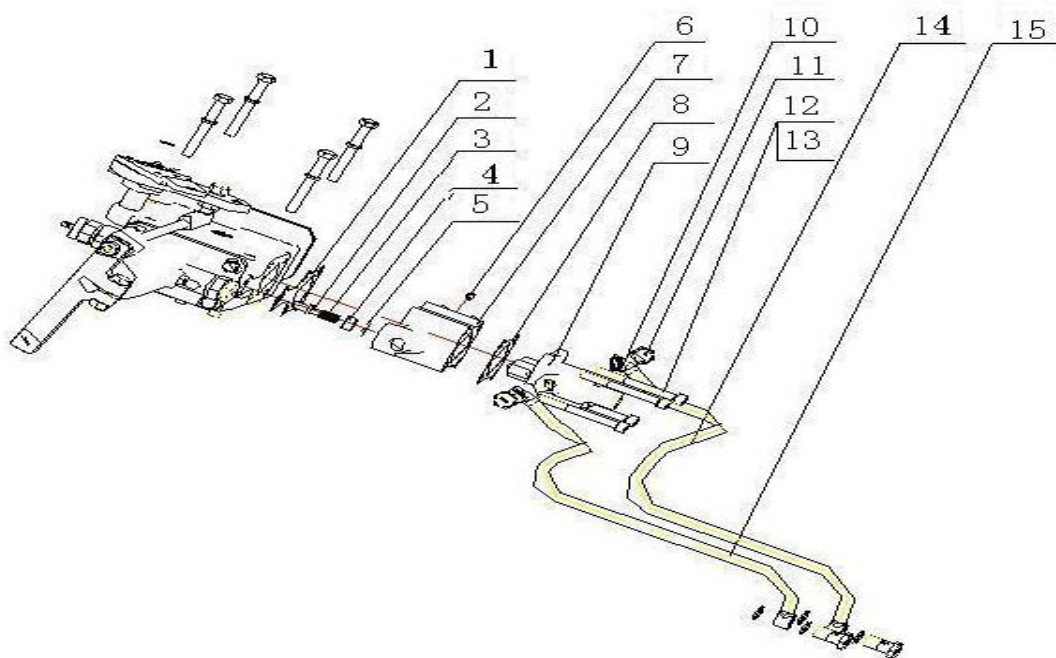
3.1.11 油泵及管路组件/Oil Pump and Pipe



3.1.12 气动管路阀组件/Air Pipe and Valve

序号	零部件图号	名称	Part Name	数量	备注
No.	Part No.			Qty	Remark
1	WG2229250023	气控阀纸垫	Paper pad	1	From 20110107
1	AZ2229250023	气控阀纸垫	Paper pad	1	To 20110107
2	WG2229250015	锁止销	Pin	1	From 20110107
2	AZ2229250015	锁止销	Pin	1	To 20110107
3	WG2229250004	弹簧	Spring	1	From 20110107
3	AZ2229250004	弹簧	Spring	1	To 20110107
4	WG2229250017	衬套	Bush	1	From 20110107
4	AZ2229250017	衬套	Bush	1	To 20110107
5	WG9003071700	O形圈	O-ring	1	From 20110107
5	AZ9003071700	O形圈	O-ring	1	To 20110107
6	WG2229250006	直通	Through connector	1	
7	WG2203250010	气控锁止阀总成	Lock Valve ass.	1	From 20110107
7	AZ2203250010	气控锁止阀总成	Lock Valve ass.	1	To 20110107
8	WG2229250024	双H阀衬垫	Gasket	1	From 20110107
8	AZ2229250024	双H阀衬垫	Gasket	1	To 20110107
9	WG2203250003	双H阀总成	Double "H" valve ass.	1	From 20110107
9	AZ2203250003	双H阀总成	Double "H" valve ass.	1	To 20110107
10	Q72314	密封垫圈	Sealing washer	8	
11	190003962621	空心螺栓	Female screw	4	
12	Q218B0880	内六角圆柱头螺钉	Screw	4	

3.1.12 气动管路阀组件/Air Pipe and Valve



3.1.13 离合器操纵组件/Clutch Control System

序号	零部件图号	名称	Part Name	数量	备注
No.	Part No.			Qty	Remark
1	WG2214260001	离合器分离拨叉	Fork	1	
2	WG2203260008	拨叉轴总成	Shaft assembly	1	
3	Q5510825	普通平键	Key	2	
4	Q2881016F9	内六角锥端紧定螺钉	Screw	2	
5	AZ2203260001	拨叉轴支架总成	Bracket assembly	1	
5.1	WG2229003030	复合衬套	Bushing	1	
5.2	WG2229260001	拨叉轴支架	Bracket	1	
6	Q43130	轴用弹性挡圈	Circlip	1	
7	Q150B1030	六角头螺栓	Bolt	4	
8	Q40310	弹簧垫圈	Spring washer	4	
9	WG2229260016	助力缸支架	Bracket	1	
10	Q40310	弹簧垫圈	Spring washer	3	
11	AZ9007970242	螺纹紧固胶	Thread glue	1	
12	AZ2229260014	盖板	Cover	1	
13	Q150B0615	六角头螺栓	Bolt	4	
14	Q40306	弹簧垫圈	Spring washer	4	
15	WG9003801062	六角头螺栓Q150B1062	Bolt	3	

3.1.14 变速器操纵附件/Shifting Accessories

